



Grids, Stripes, and Checks:

Gingham Reimagined for Contemporary Homes

A Thesis Collection by Emily Robinson

...

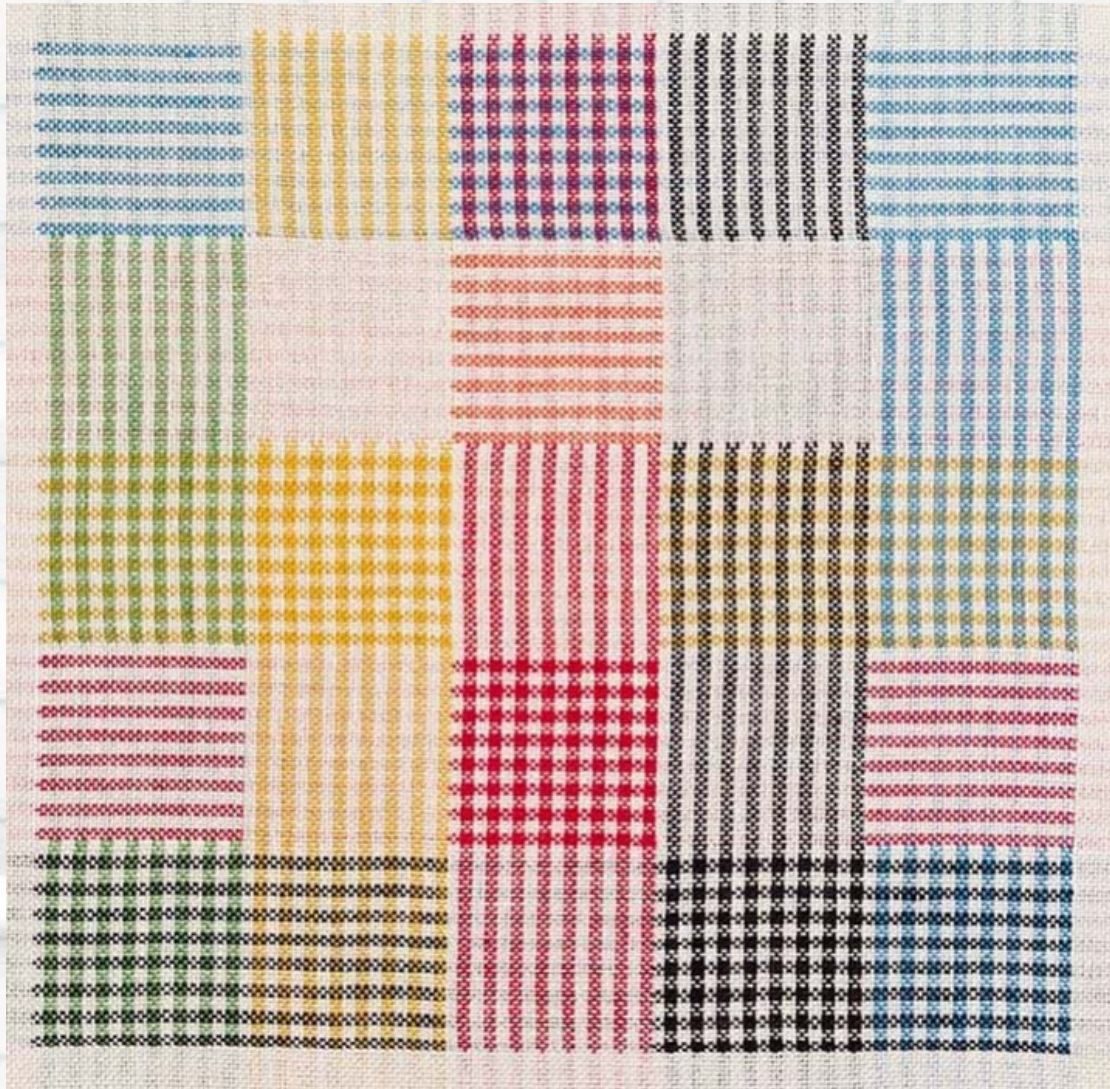


...



...





Susie Taylor, @weaving.origami



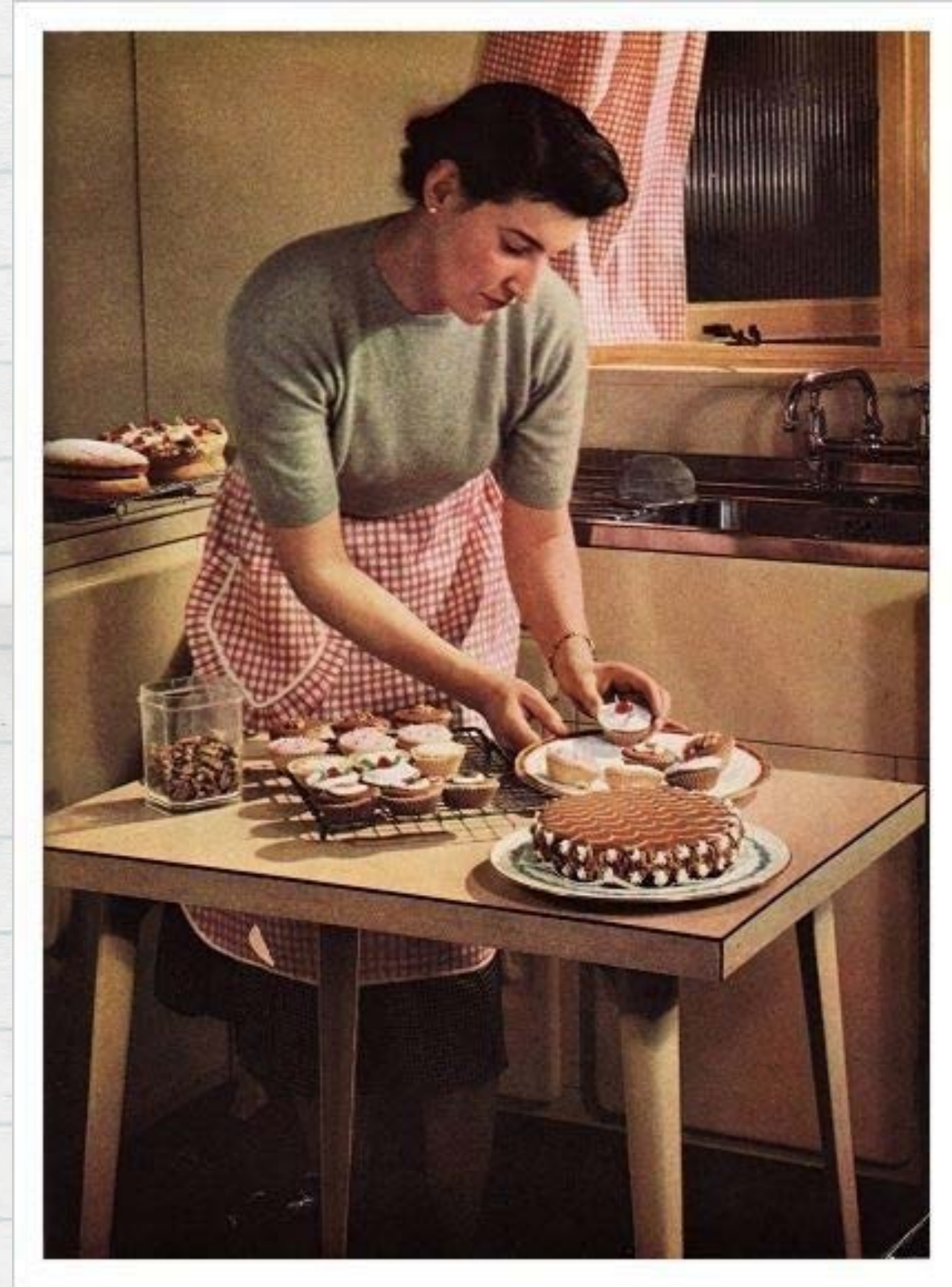
Mara Hoffman



Thom Browne



Meghan Spielman,
@megmarymarie

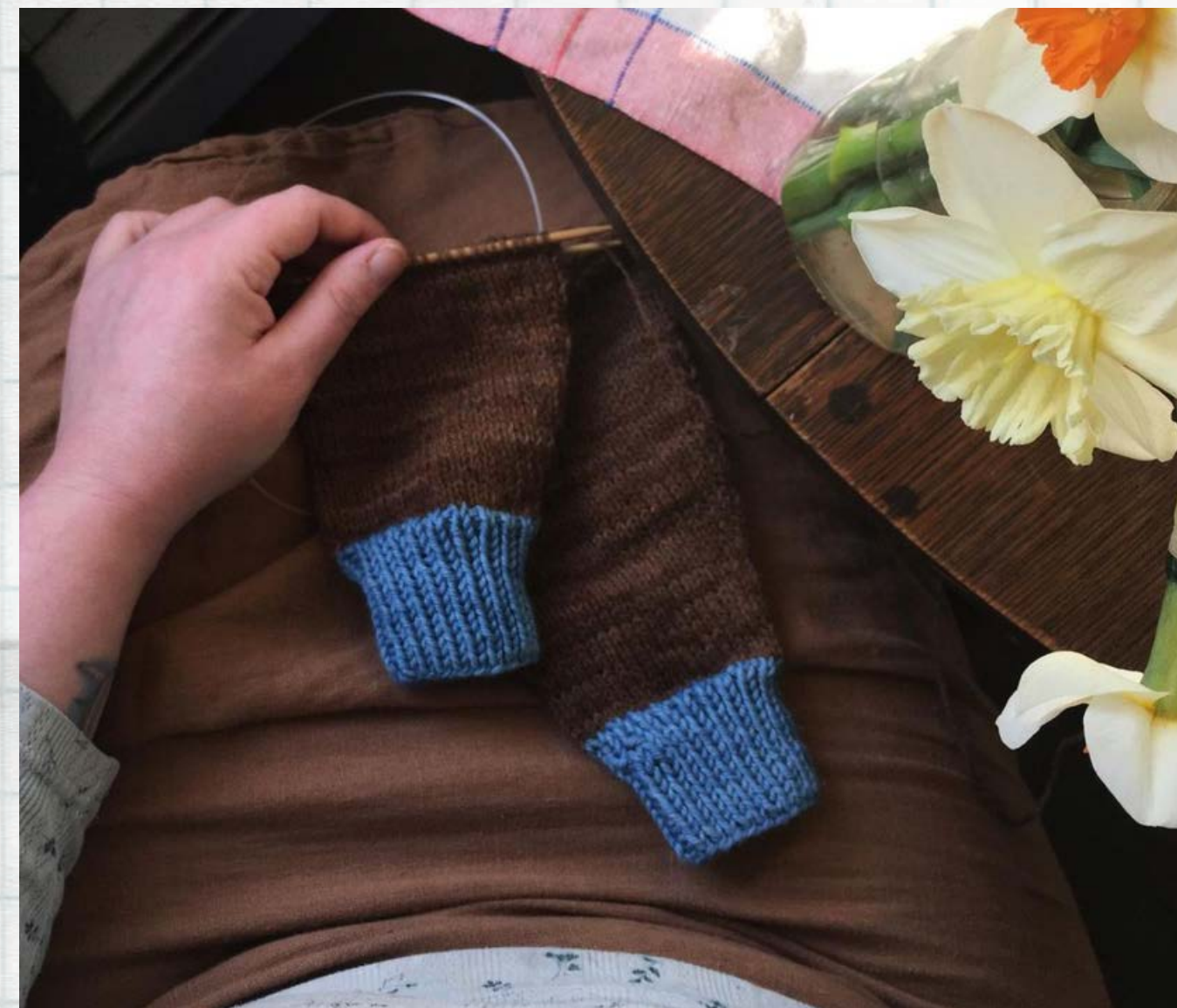




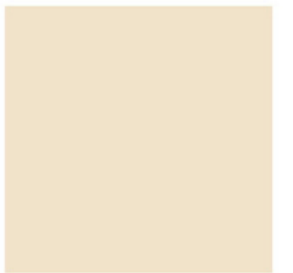
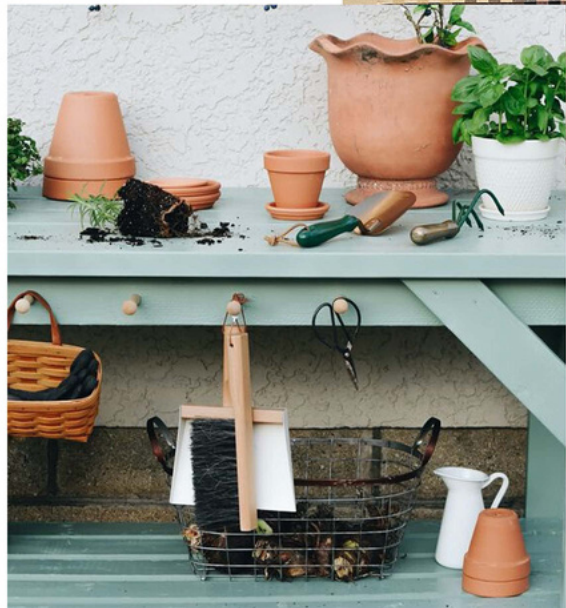
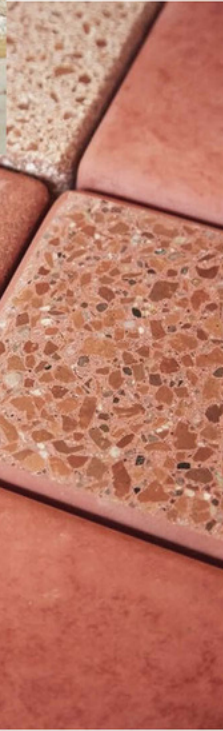
@alysonsimplylygrows

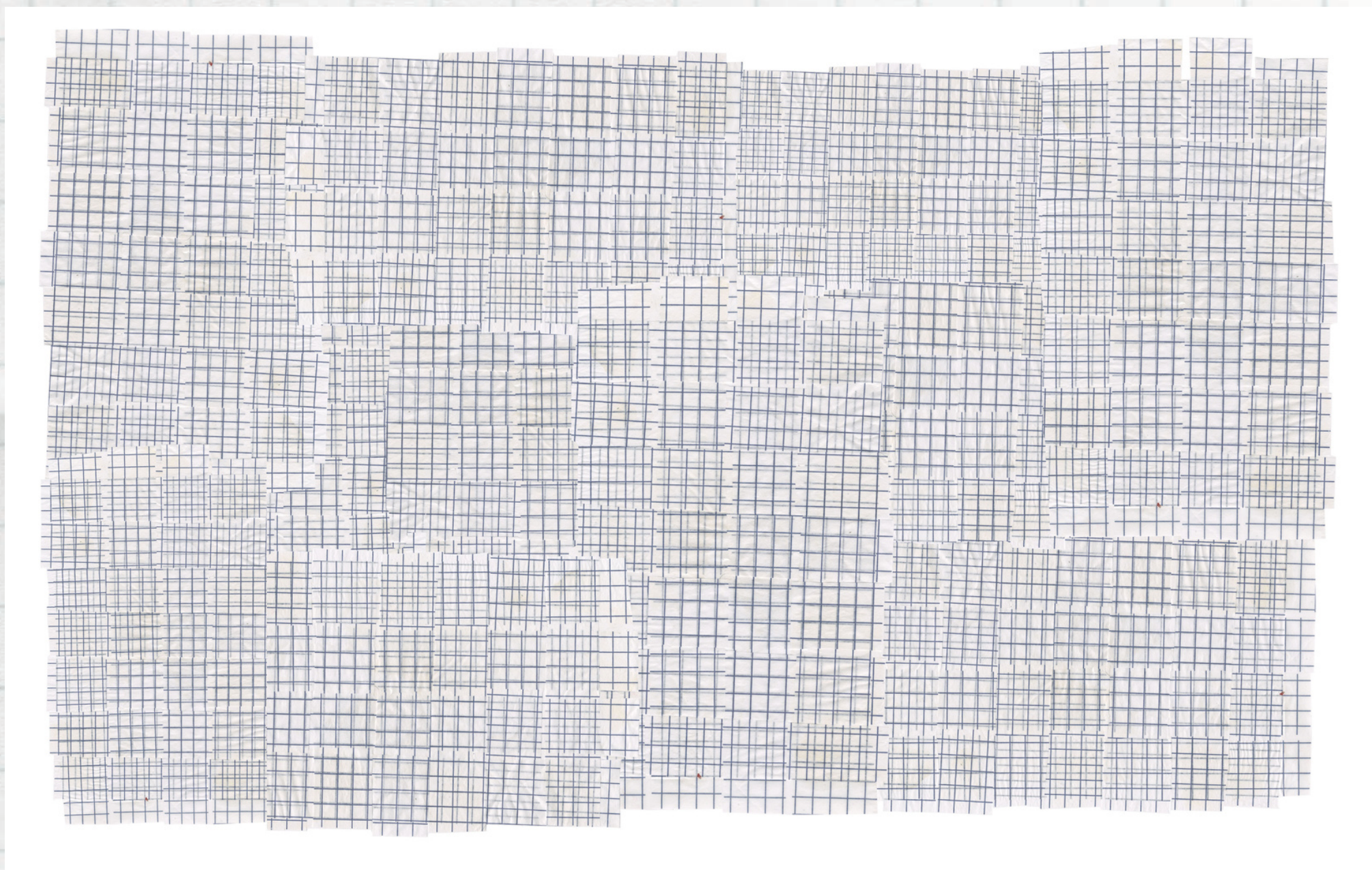
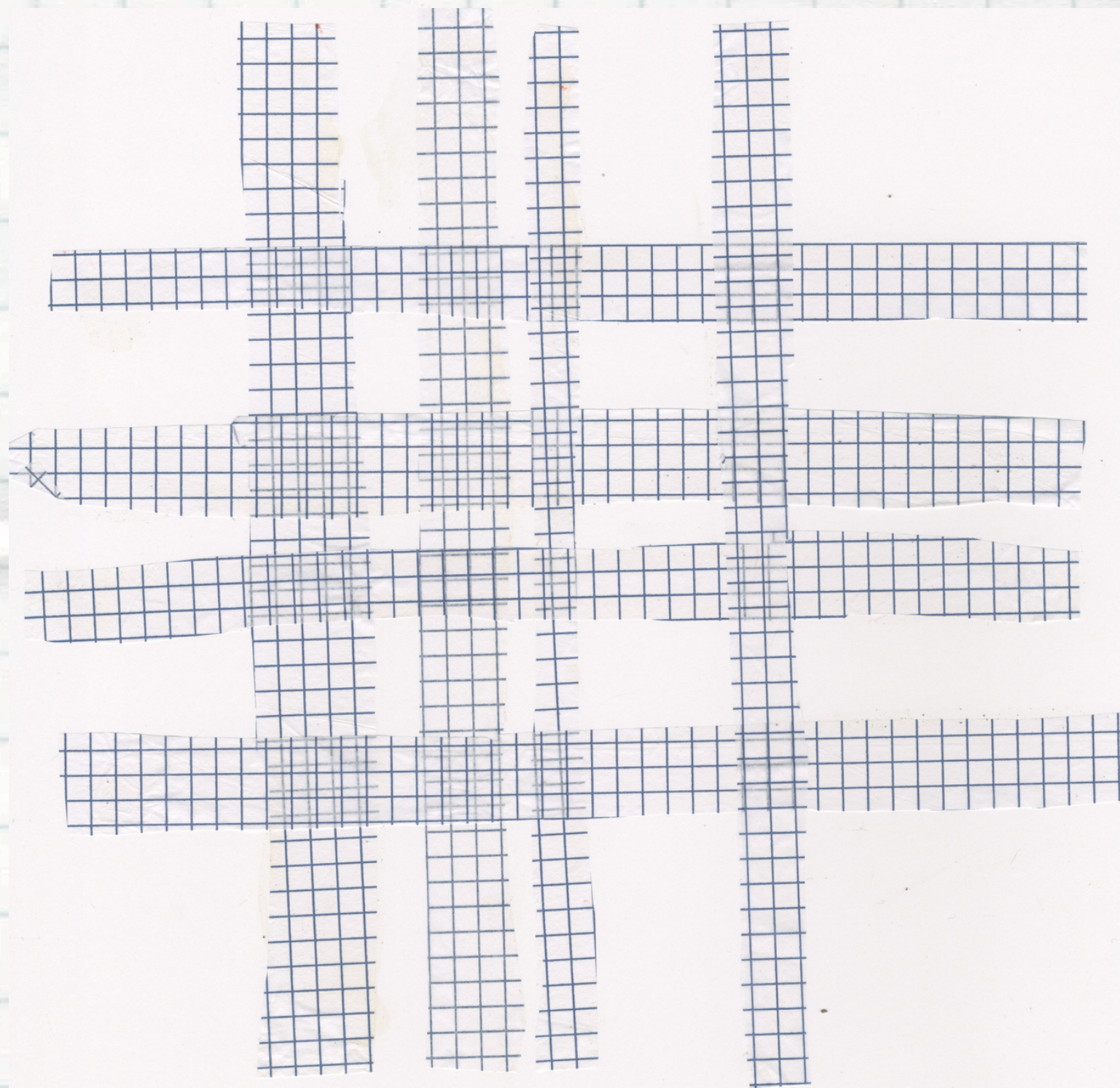


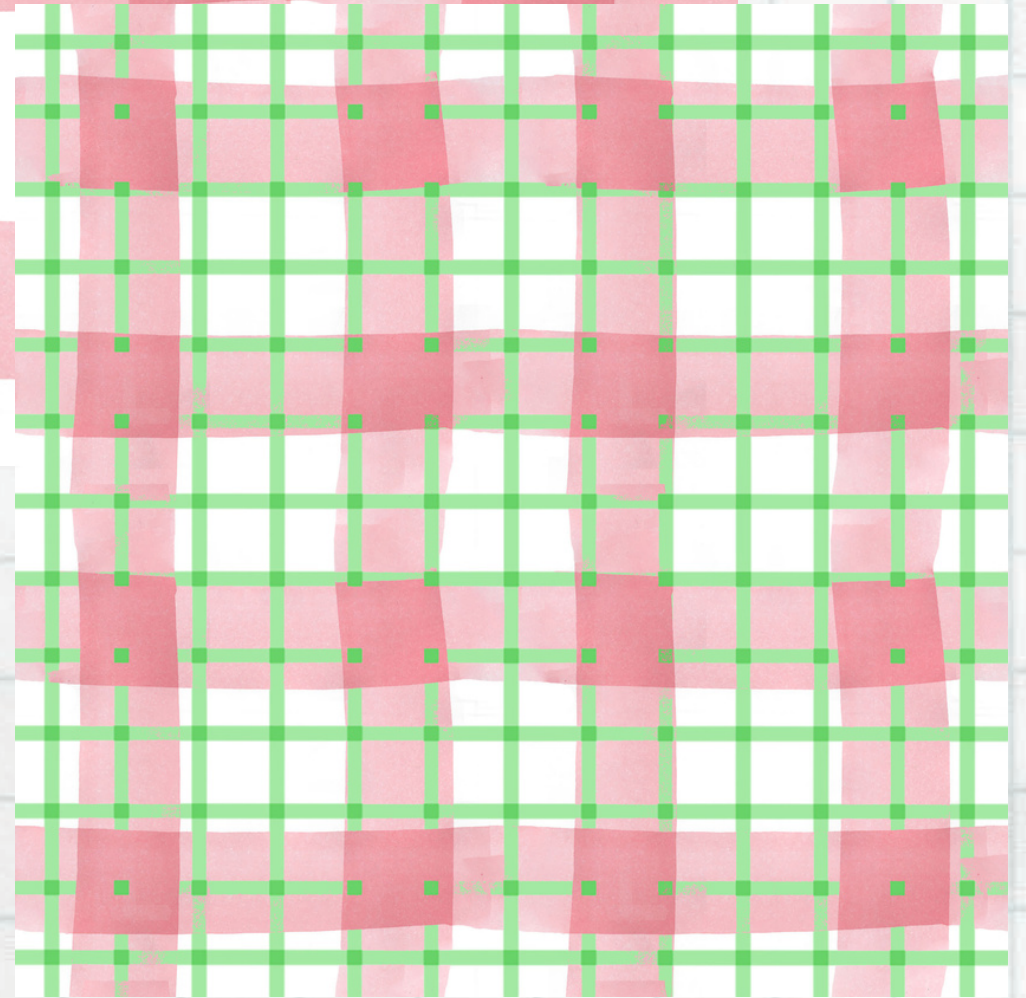
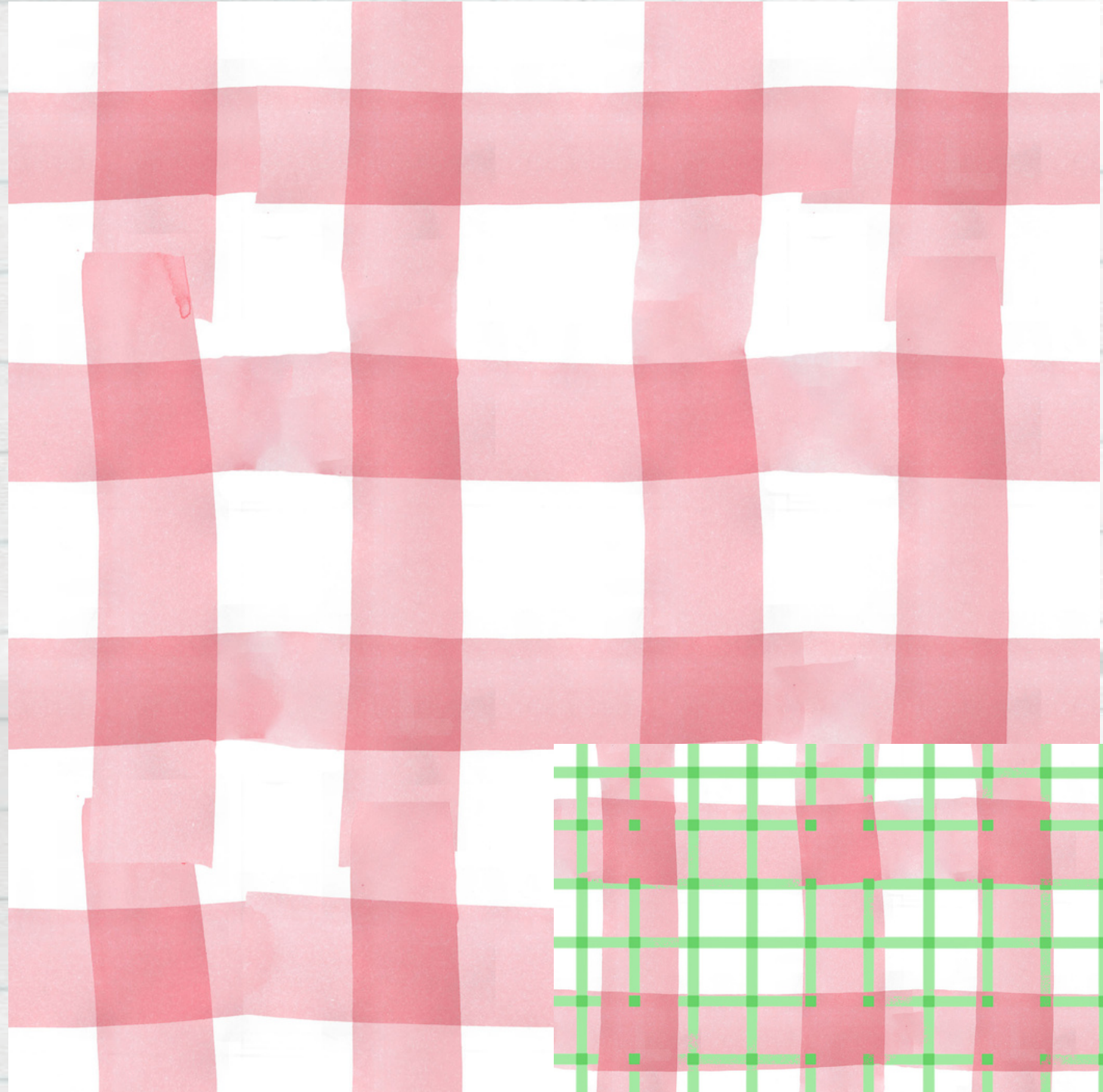
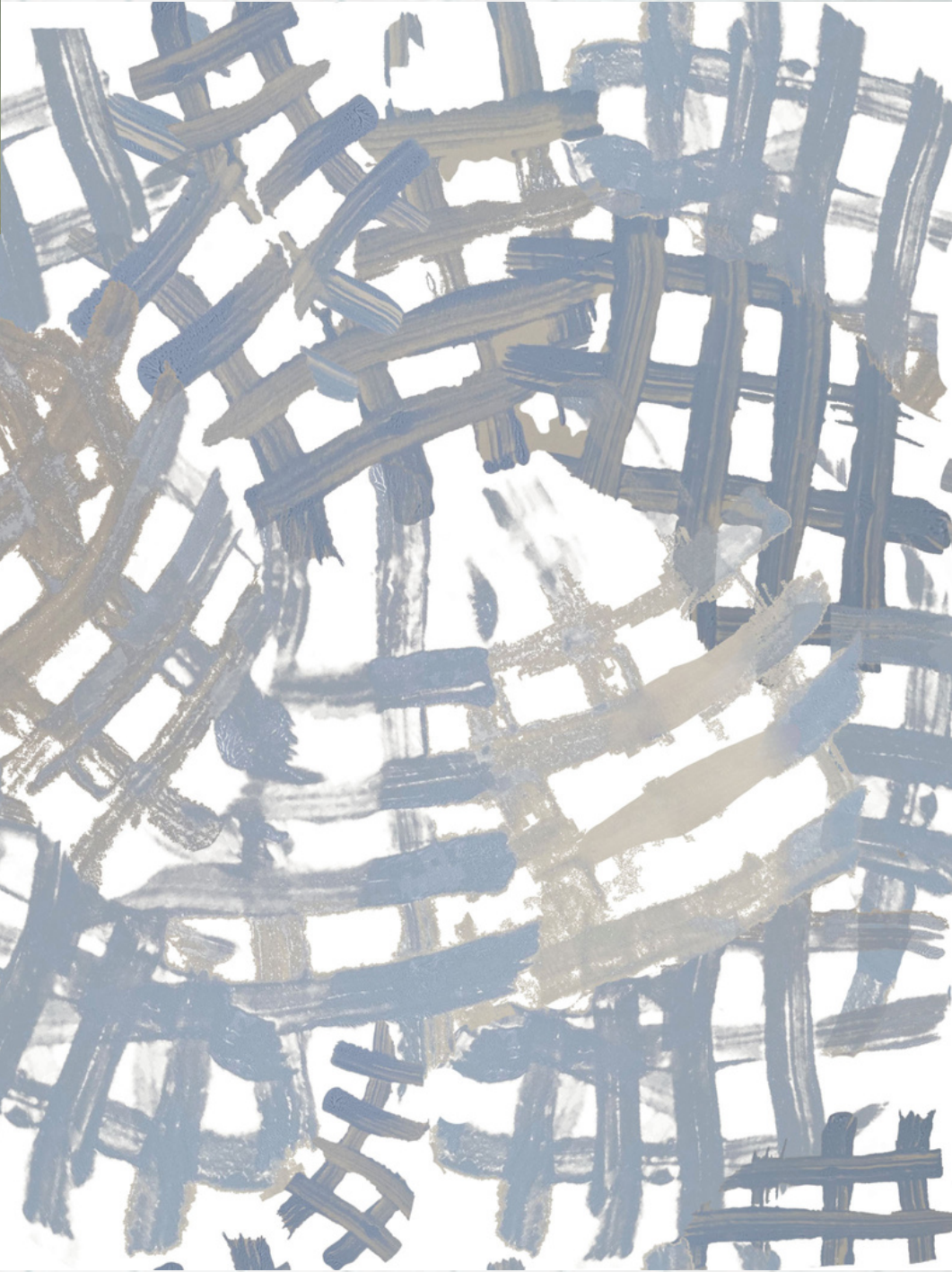
@simply.living.well



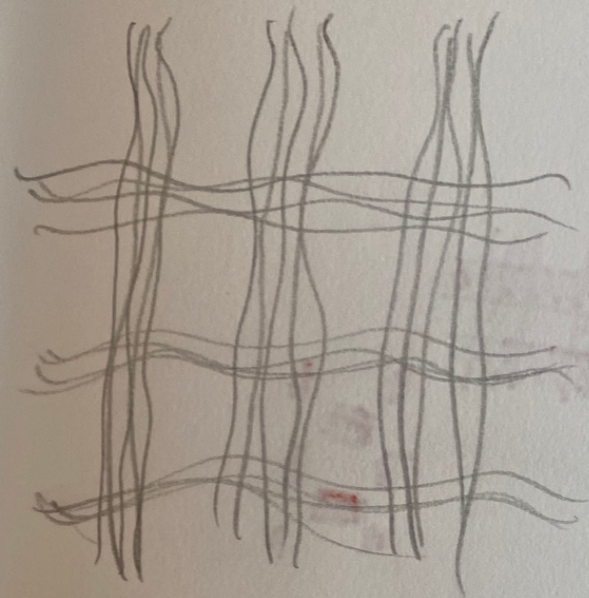
@sugarhouseworkshop





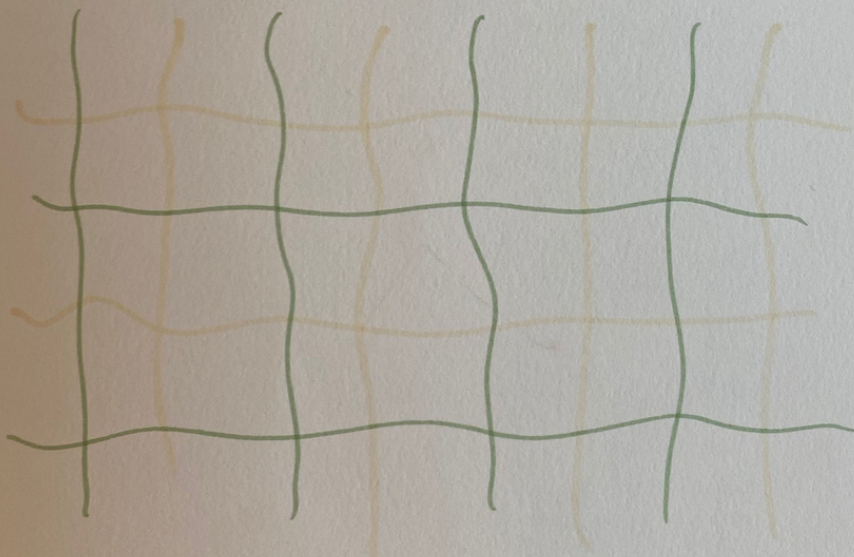






fewer ends,
more spaced out,
or, is it important
that open space or
rough space?

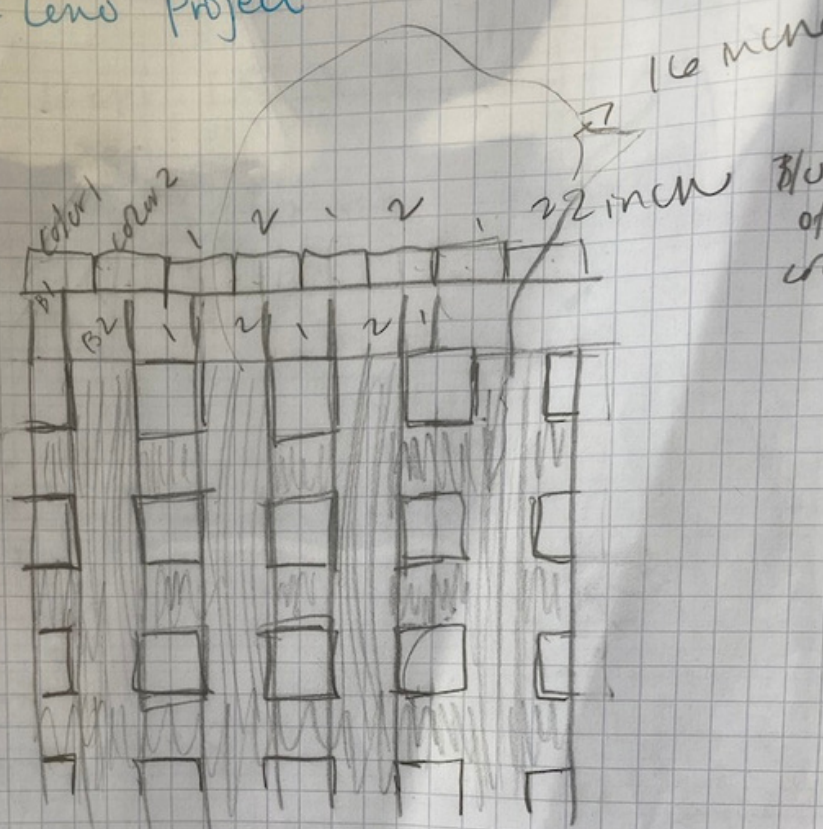
groups of 10 ends of
pvc, (1/2 inch), with
1/2 inch open space
on either side



- a third PVC piece

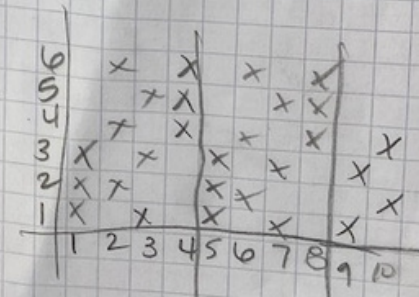
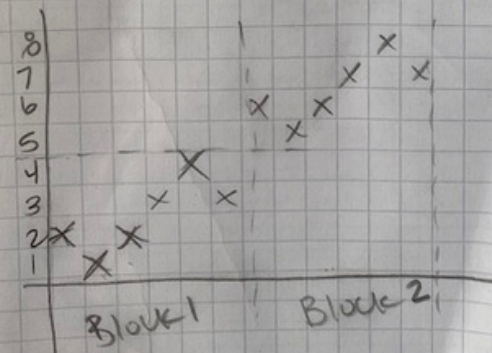
mark leno project

Pg 127



all over move leno in 2 blocks

Pg 131. Lift plan



gingham/check Double cloth

12epi striped warp

4 ends per stripe

micro gingham

15 inches (12 x 15) = 240 in L1

12epi, sub stripe

4 x 15 = 180 ends

240

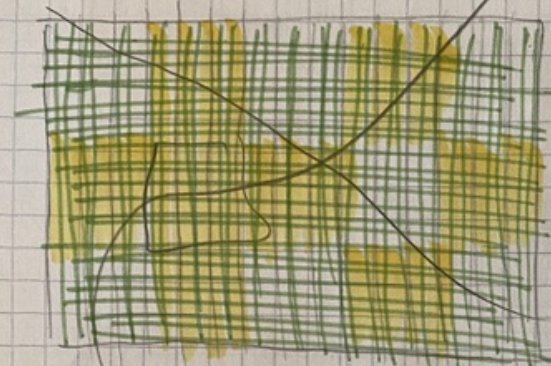
180

4 = 45

170 ends

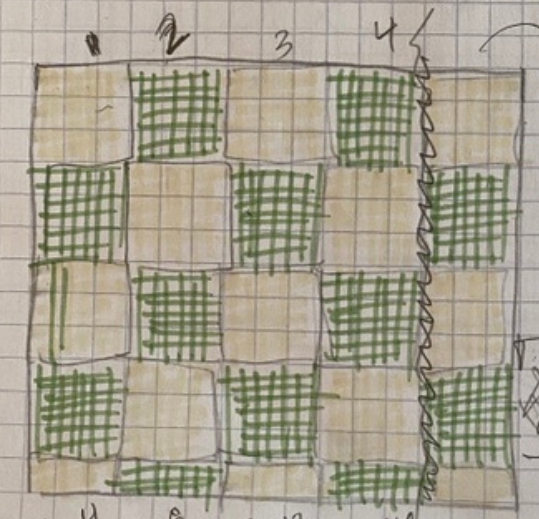
22 + 22 of each

30 each stripe



varying density
across width?

or varying
width in
different
blocks



warp @ 12epi,
decide later
on how to
dent

1-4

5-8

9-12

13-16

1-4

5-8

9-12

13-16

1-4

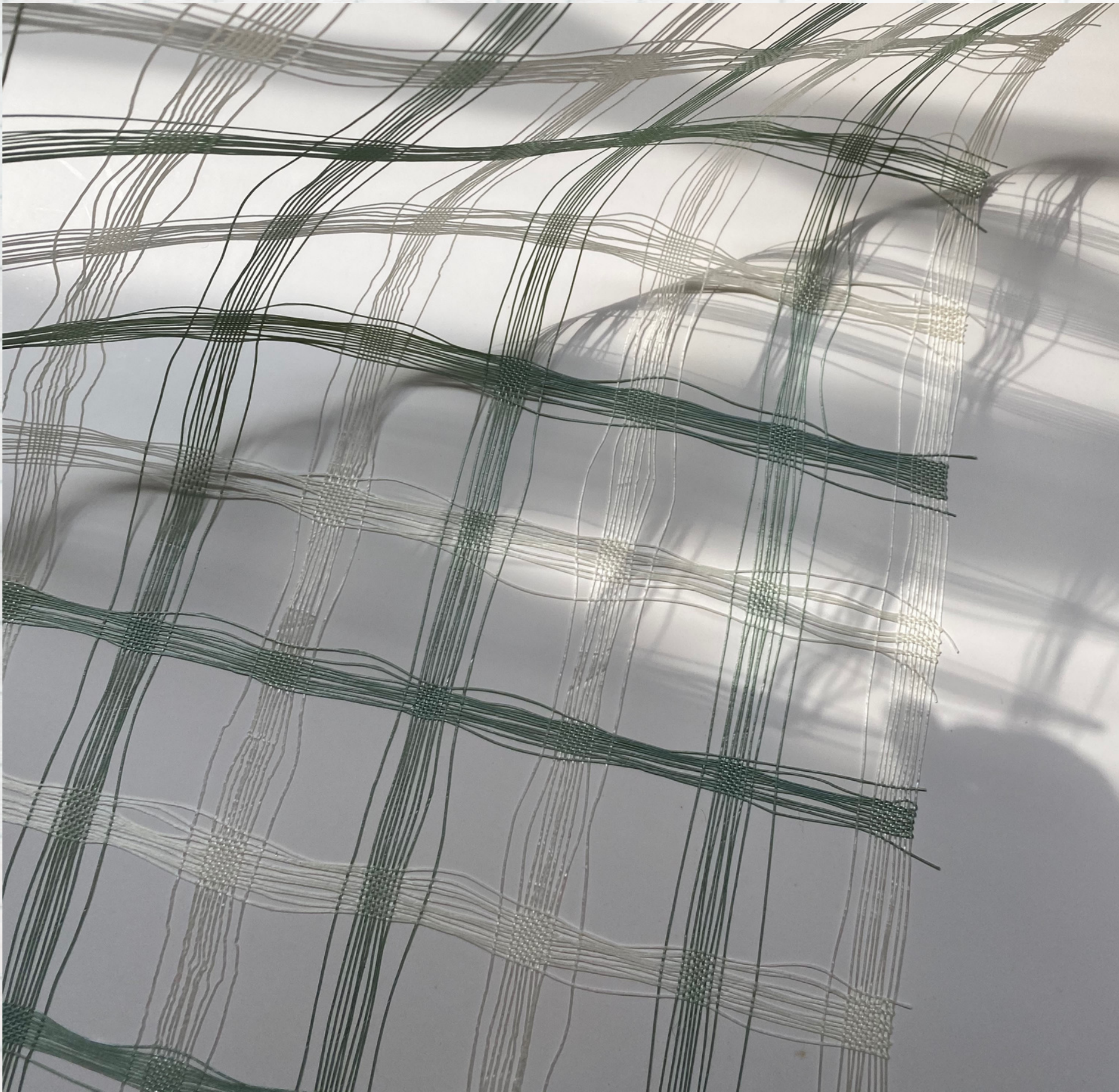
5-8

9-12

13-16

ODD = Top layer 1, 3, 5, 7, 9, 11, 13, 15

EVEN = Bottom stripe layer 2, 4, 6, 8, 10, 12, 14, 16





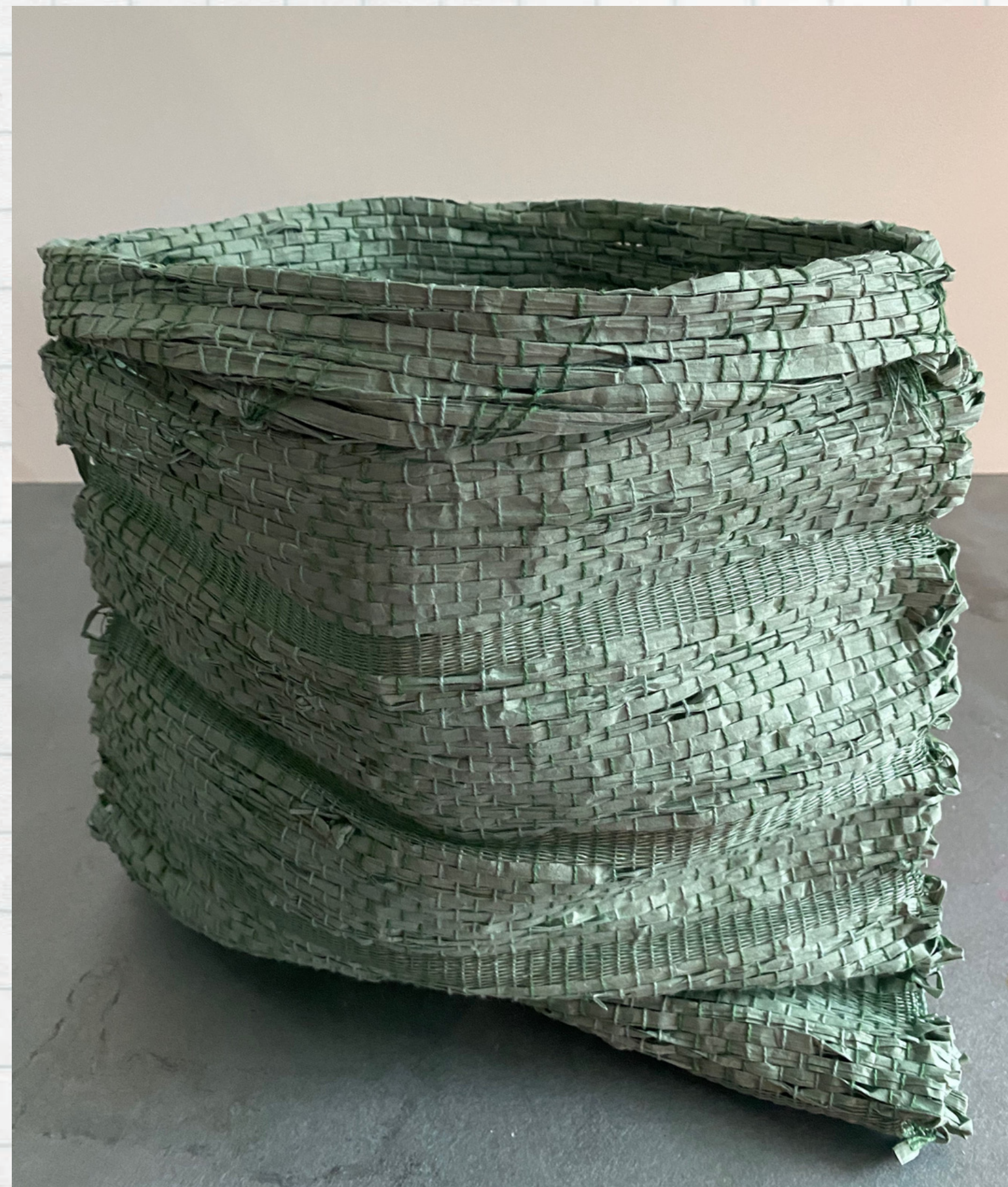


























Thank You!

Follow along on Instagram: @texas_hands